

# Origins Insights

A MONTHLY PUBLICATION OF THE  
CREATION SCIENCE FELLOWSHIP



July 2005

## **The Age of the Universe from a Creationist Framework: Answering the Question from Science, Part Three**

by Bob Harsh

Editor's Note: This article is being presented in multiple parts spread over several issues of *Origins Insights*. Last month Bob discussed how the layers of ice in Greenland provide evidence of a young earth and the mystery of World War II airplanes buried under the ice.

### **Massive Size Of Sedimentary Formations.**

The Coconino Sandstone formation is a uniform sedimentary layer that covers 200,000 square miles. The St. Peters sandstone formation spans over 500,000 square miles in central US.

These large uniform formations could not have had their origin due to local geographic features, such as erosion carried by rivers and river deltas formation, when considering massive and long distance material transport and deposition.

On the other hand, a flood model predicts this kind of uniformity over large areas. The flood was a catastrophic event that had the capacity to erode vast areas, transport the materials long distances, and deposit them over large areas.

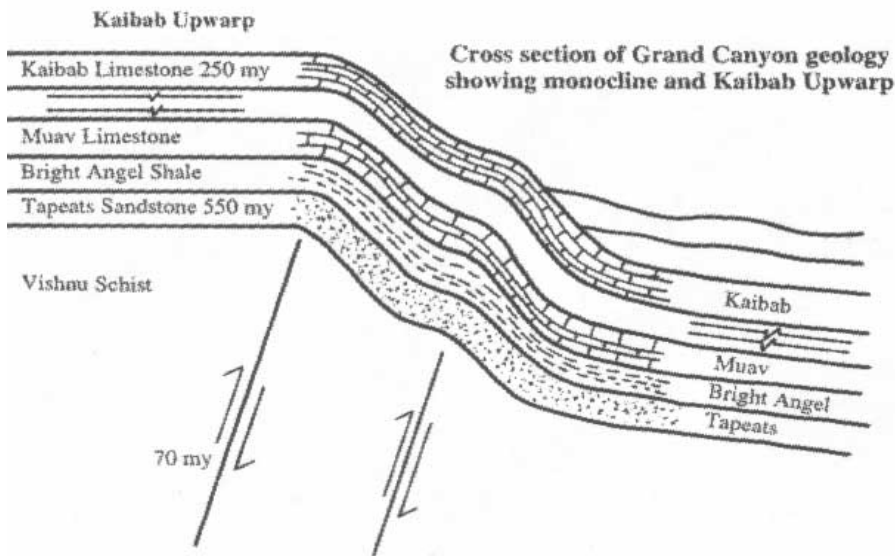
Radioisotope dating has also identified problems with dating of sedimentary rocks. There are places in the Grand Canyon where we find basaltic intrusions between the sedimentary layers. Due to their volcanic origin, testing their relative concentration of certain radioisotopes can date basaltic rock. Using the Ru/Sr isochron method in the Grand Canyon basaltic rock have been tested. The results show that some basalt near the surface show an age of 1.34 billion years. The date for another sample thousands of feet deeper shows a date of 1.07 million years. If uniformitarian interpretation is true rocks several thousand feet lower should be much older than less deep samples not 300 million years younger.

### **CSF Meetings**

**There will be no meetings during the months of July and August for both CSF North and South. CSF North plans to have the tour of The Carnegie Museum in September led by Phil McCaffrey. The date and times will be announced in the September issue of Origins Insights.**

Sedimentary rock was created as sediment, most likely deposited from rapidly flowing water. Although they were laid down level or at a gentle slope many have been bent due to uplifting pressure zones. Evolutionary naturalists claim these formations were deeply buried and **became solidified** for hundreds of millions of years before they were bent.

### Sedimentary Rock Strata Are Too Tightly Bent.



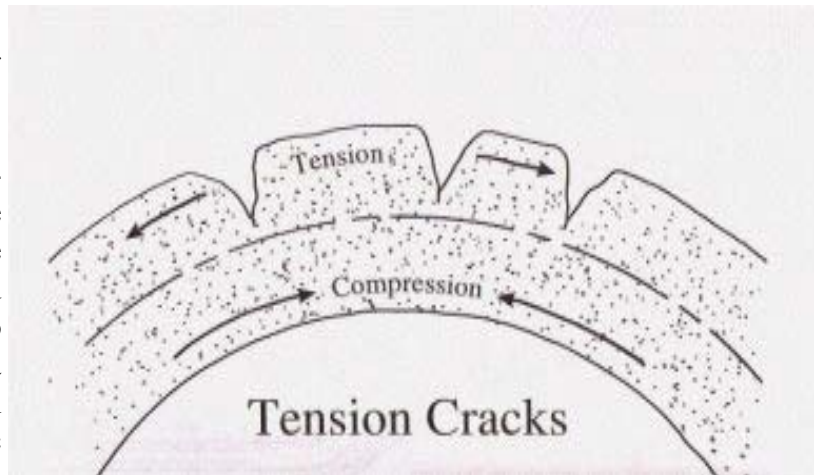
Grand Canyon strata show geologic time is imaginary By Tas Walker

Try bending a pretzel! After a pretzel is baked it solidifies and will crack if it is put under pressure. But pretzels are bent!! How did they get bent without cracking? That is similar to how sedimentary rock layers got bent **without cracking**. The sedimentary layers were still plastic when they were bent.

The Grand Canyon shows 5,000 feet warping without cracks!!! The evidence indicates that the sediments were soft

and unconsolidated when they bent. Instead of fracturing like the basement did, the entire layer thinned as it bent.

The sand grains show no evidence that the material was brittle and rock-hard, because none of the grains are elongated. Neither has the mineral cementing the grains been broken and recrystallized. Instead, the evidence points to the whole 1,200-m (4,000-ft) thickness of strata being still 'plastic' when it was uplifted. In other words, the millions of years of geologic time are imaginary. This 'plastic' deformation of Grand Canyon strata dramatically demonstrates the reality of the catastrophic global Flood of Noah's day.



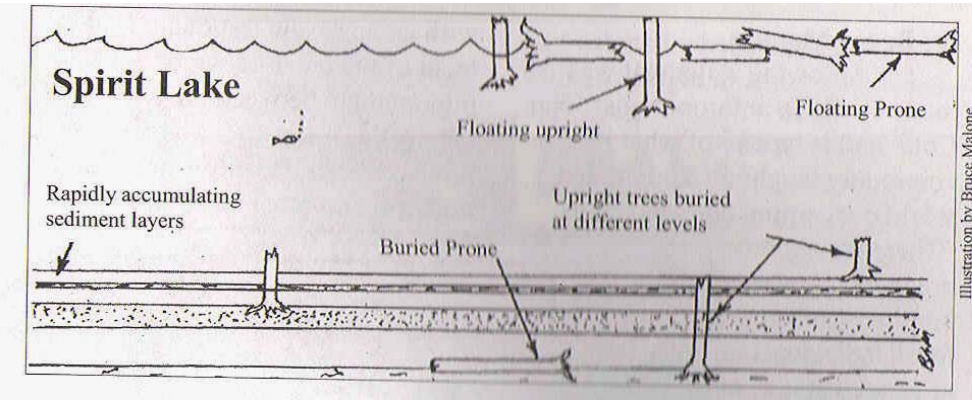
How could sedimentary layers, hundreds of feet below the surface remain so plastic that they could be severely bent and yet not crack? The vast amount of sediment could only have been laid down due to the enormous forces produced at the time of Noah's flood. Plate tectonics pushed the folds into the sedimentary layers while the layers were still plastic.

These sedimentary layers bent without consistent cracking is evidence these sedimentary layers were laid down during Noah's flood while they were still plastic!

**Polystrate fossils are also evidence for sedimentary rock laid down by Noah's flood.** Polystrate fossils cross two or more sedimentary layers. Many places in the world contain fossil trees that traverse many layers of strata. Some trees are over 80 feet long. The strata consist of shale, limestone, sandstone and coal. These

trees could not have grown up through the strata without sunlight and air. These trees could only have been preserved by rapid burial.

At Joggins, Nova Scotia, polystrate tree (and root) fossils are found at various intervals throughout roughly 2,500 feet of strata. Many of these are from 10-20



feet long. Very few of these trees have attached roots, and even fewer with rootlets also attached.

Several scientists have documented the rapid burial of trees in the sediment laid down in Spirit Lake following the eruption of Mt. St. Helens. Whole trees were blasted by the eruption into the lake. Some floated and then sank to the bottom of Spirit Lake. Sediment from the surrounding disrupted soil eroded into the lake in a matter of weeks and formed sedimentary layers around the submerged trees. This process is producing results that look an awful lot like polystrate fossils.

**Conclusion: Sedimentary rock layers were laid down rapidly by a gigantic flood.** I believe Noah's flood was the primary cause of most of the sedimentary rock layers.

Next month Bob will discuss some of the problems and assumptions with current radiometric dating methods.

## CSF Dues: Are You Current?

**Check the date on the mailing label of this issue.** This date shows the last time your dues were paid. Your CSF board is asking that you bring your dues status up-to-date by sending in your payment of \$15. The publication of this newsletter is a big part of the CSF budget and your modest dues help to cover its printing and mailing costs.

Fill out and return the coupon on the right to:

Reid Moon  
Creation Science Fellowship  
P.O. Box 99303  
Pittsburgh, PA 15233-4303

CSF Member/Subscriber Renewal

Name: \_\_\_\_\_

Address: \_\_\_\_\_

City: \_\_\_\_\_ State: \_\_\_\_\_ ZIP: \_\_\_\_\_

Phone: \_\_\_\_\_

E-mail: \_\_\_\_\_

\$15 annual dues can be paid by personal check or money order

# Summer Creation Science Events

## 2005 Creation MEGA Conference July 17-22, 2005 Liberty University, Lynchburg, Virginia

The MEGA Conference is offering two tracks, basic and advanced, with sessions for ages 12 and up. This conference is co-sponsored by AIG and Liberty University in conjunction with CRS, Master Books, ICC, CSF and The Old Schoolhouse magazine. See [www.CreationMegaConference.com](http://www.CreationMegaConference.com) for more details.

### Creation Mountain Adventures 2005 Alpha Omega Institute Twin Peaks, Family Science Adventure, July 3-8, 2005 and Readcloud Family Mountain Adventure July 31-Aug. 5 and Aug. 7-12, 2005

These three adventures are held in the mountains of Colorado and offer an excellent opportunity for families to explore and enjoy some creation teaching. For more information see [www.discovercreation.org](http://www.discovercreation.org)

**Creation Science Fellowship, Inc.**  
Newsletter is published monthly.

**Purpose:** The aim of Creation Science Fellowship is to inform and educate people of the biblical, philosophical and scientific validity of creationism.

**Circulation:** 430

**Officers**

Reid Moon .....Chmn./Sec./Treas.  
Stu Chandler.....CSF Books  
Jim Hawk.....Board Member  
Phil McCaffrey.....Speaker's Bureau  
Tom Duke.....CSF South  
Robert Ivey.....Web Site/Newsletter  
TBD.....TBD

**Email:** [csficc@csfpittsburgh.org](mailto:csficc@csfpittsburgh.org)  
**Web Site:** [www.csfpittsburgh.org](http://www.csfpittsburgh.org)

Address Service Requested

Non-Profit Org.  
U.S. Postage  
PAID  
Pittsburgh, PA  
Permit No. 2548

CREATION SCIENCE FELLOWSHIP, INC.  
P.O. Box 99303  
Pittsburgh PA USA 15233-4303  
Phone: (412) 341-4908