

**Creation Science Fellowship, Inc
One Year Creation Program**

**A Biblical Framework for the
Astroscience and
Geoscience Creation Sub-
Models**

Robert E. Walsh
February 3, 2011

Agenda

- Introduction
- Biblical Criteria for Creation's Astroscience Sub-Model
- Biblical Criteria for Creation's Geoscience Sub-Model
- Comments on the Canopy Model
- Questions and Answers

Introduction

Introduction

- The consistent normative understanding of the Biblical Text provides the Biblical model of origins
- The Biblical Creation Model provides the criteria and framework for creating a scientific model of Creation and the Flood (Origins)
- The Biblical Model is used to “interpret” the field data, not the reverse!
- The Biblical Model of Origins is not limited to the origin of life, but includes life principles as well (just as Evolution)

Biblical Criteria for Creation’s Astroscience Sub-Model

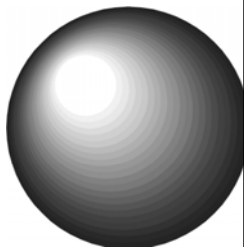
The Constituents of the Cosmos

- **“In the beginning God created the heaven and the earth.” [Genesis 1:1]**
 - “In the Beginning” [Bereshit] refers to the absolute beginning of “time”, thus time is a fundamental constituent of the cosmos.
 - “Heaven” [Shamayim] (heavenS) are a fundamental constituent of the cosmos. We associate “shamayim” to what we usually think of as “space”. Also “firmament” is equivalent.
 - “Earth” [Erets] refers to the earth, here we extrapolate to the creation of all matter implicitly or explicitly [all was water on day one] (See Genesis 1:2).

The Resultant Cosmos (Gen 1:1)

• The “moment” after Gen 1:1

- The resulting cosmos was all water (H₂O)
- All of the newly created space contained all of newly created matter - which was water
- The text calls the water “tehowm” (the deep)
- The “deep” is what was “yet without form” (because it was water [mayim])



The Appearance of Light

Gen 1:3 And God said, Let there be light: and there was light.

4 And God saw the light, that it was good: and God divided the light from the darkness.

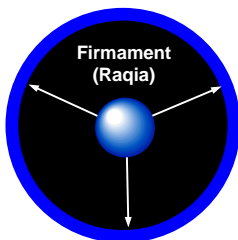
5 And God called the light Day, and the darkness he called Night. And the evening and the morning were the first day.

- Light seems to “appear” as opposed to being created.
 - Is light an inherent part of “matter in motion”?
- Light exists prior to the creation of the sun [Day 4]
- The dividing of the light from the darkness indicates specific “direction”
- The creation of the entire original cosmos and light took 24 hours
 - “Evening and morning were the first day” [Day One]

Forming the Firmament

• The Expanding Firmament (Gen 1:6-8)

- From the Hebrew word “Raquia”
- Placed “between” the waters [mayim] below [earth area] and the waters above [cosmic-edge]
- Created stellar objects within the firmament
- Created sun and moon
- All formed from the “expanding waters”



The Nature of Space

- Many Biblical passages speak of the heavens being rolled out and stretched out like a scroll
- "...and the heavens shall be rolled together as a scroll:" [Isa 34:4]
- "...and the heaven departed as a scroll when it is rolled together" [Rev 6:14]
- "Who alone spreadeth out the heavens" [Job 9:8]
- See also Psalm 102:25; 104:2; 144:5; Isa 40:22; 42:5; 44:24; 45:12; 51:13; Zech 12:1 and many more...



The Nature of Time

- Time has a beginning and a duration
- 1 Cor 15:52 describes the "harpooning" of the church to take place faster than an "atom of time" (atomos)
- So fast that man can not observe it
- Does this speak of a time element smaller than man can measure?



Criteria for the Biblical Astroscience Sub-Model

- On the macroscopic scale SPACE is viewed as a scroll
 - Space can be stretched like a curtain
 - Space can be folded and bent like a sheet
 - Space expanded from a central area
 - Space is bounded [has an edge]
- On the microscopic scale SPACE is viewed as a scroll
 - A scroll is made up of individual fibers
- Space is finite
- Space is created and therefore not "absolute"

Criteria for the Biblical Astroscience Sub-Model

- Time has an absolute beginning
- Time has duration
- Time is quantized
 - There exists a unit of time below which man can not measure
- Time is created and therefore not “absolute”
- Light seems to simply “appear”
- Matter is created and therefore not “absolute”

Abstractions from the Biblical Criteria

- On the macroscopic scale space and time seem to be viewed as a continuum, thus **General Relativity** can be used to model the OPERATION of the space-time continuum
- On the microscopic scale space and time seem to be viewed as quantized elements, thus **Quantum Mechanics** can be used to model the OPERATION of the space-time continuum

Biblical Criteria for Creation’s Geoscience Sub-Model

Three General Components

- Day Three of Creation Week [Genesis 1]
- The Noachian Flood Phenomena [Genesis 7&8]
- The Peleg Phenomena [Genesis 10&11]

Day Three of Creation Week

Gen 1:9 And God said, Let the waters under the heaven be gathered together unto one place, and let the dry land appear: and it was so.
 10 And God called the dry land Earth; and the gathering together of the waters called he Seas: and God saw that it was good.

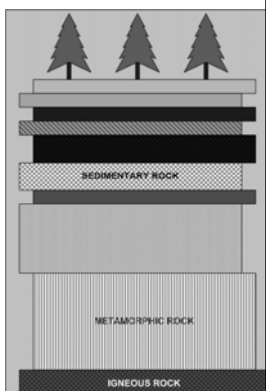
11 And God said, Let the earth bring forth grass, the herb yielding seed, and the fruit tree yielding fruit after his kind, whose seed is in itself, upon the earth: and it was so.

12 And the earth brought forth grass, and herb yielding seed after his kind, and the tree yielding fruit, whose seed was in itself, after his kind: and God saw that it was good.

13 And the evening and the morning were the third day.

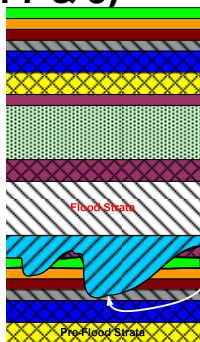
Day Three of Creation Week

- Day Three of Creation Week saw the creation of the Antediluvian Geologic Column (AGC)
- The entire Antediluvian Geologic Column was formed in less than 24 hours
- Plant life was created AFTER the AGC was created
- Thus, no fossilization could have occurred on day three
- No fossils present in the AGC (Pre-Cambrian)



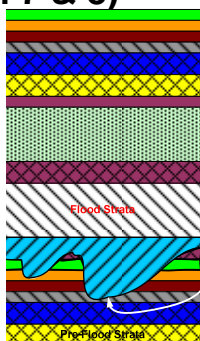
Noah's Flood (Gen 7 & 8)

- The Flood would have "ripped up" much of the Antediluvian Geologic Column
- The previous column would have been redeposited in the form we see today.
- A boundary exists between Pre-Flood and Flood (PFF) strata
- The PFF boundary may vary from place to place
- The PFF boundary may also be identified with the appearance fossils



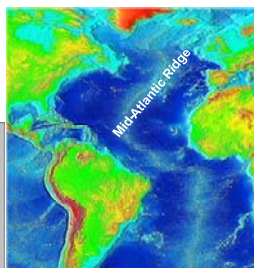
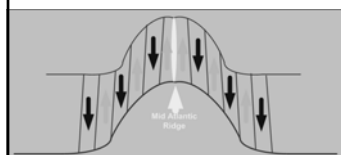
Noah's Flood (Gen 7 & 8)

- The Flood lasted approximately 370 days
- The Flood Strata were laid down in slightly more than a year
- Localized Post Flood events would have occurred globally (e.g. Grand Canyon)
- At least 50 Magnetic Field reversals in the Flood year (D.R. Humphreys)
 - Many recorded in the Post Flood strata

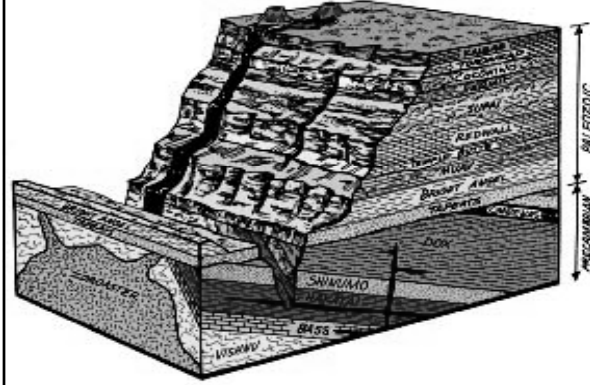


Peleg and Continental Drift

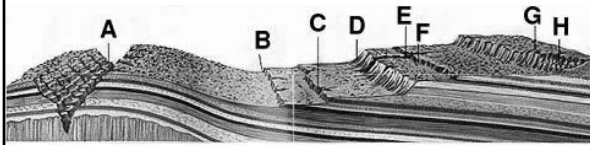
- Peleg was born more than 100 years after the Flood
- Much of Continental Drift a post Flood event
 - Did CD begin at Peleg?
 - Did CD end at Peleg?
- Magnetic Field Reversals "photographed" as magma moves out from the Mid Atlantic Ridge



As Seen in the Grand Canyon



Post Flood Phenomena



Grand Canyon (A), Chocolate Cliffs (B), Vermilion Cliffs (C), White Cliffs (D), Zion Canyon (E), Gray Cliffs (F), Pink Cliffs (G), Bryce Canyon (H)





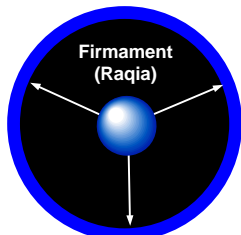
Criteria for the Biblical Geoscience Sub-Model

- Antediluvian Geologic Column created without fossils
- Flood ripped up and redeposited material into the Present Day Column
- Main part of Flood lasted 370 days
- Continental Drift occurred after (?) the Flood
- Localized "transient" activities
- Majority of fossils resulting from Flood
- Time frame 6-10K years

Comments on the Vapor Canopy Model

The Canopy and Genesis One

- God separated the waters - the outer band far beyond the Earth's Atmosphere
 - No direct or specific reference to an "Earth-Bound" vapor canopy
 - The separating of the waters allows however for residual waters to be "used" in some way for a canopy
 - Thus, there is "freedom" to produce a "canopy model" for the "modeling" of the Antediluvian Atmosphere
- There have been various models offered:
- Cloud model
 - Ice Model
 - Vapor Canopy Model
 - Carbon Dioxide Model



??? QUESTIONS ???
